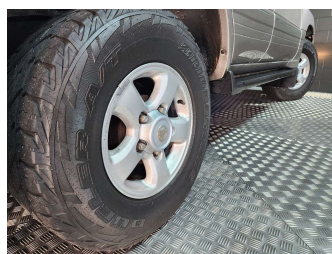
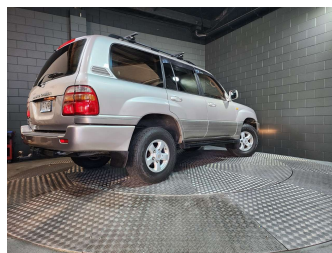


1998 Toyota Landcruiser VX LTD



Purchase Price **\$29,995**
Includes GST, Registration & Licensing

Indicative repayments
\$148.86 per week* **FINANCE**
Based on a 48 month term & 20% deposit.
Total repayments (208) = **\$36,962.72**

Gain peace of mind with Mechanical Breakdown Insurance. **Ask us how.**

Top features
» 4WD

Body Style
5 door, SUV

Odometer
403,900 km

Engine
4163 cc, Internal Combustion


Fuel Type
Diesel

Transmission
Auto, 4WD

Wheels
-

VIN
7A8H60H0798010213

Interior
Beige, Cloth

Safety

Based on 2025 UCSR rating for 98-07 models

Reg No.
XR7498

Ext Colour
Silver

History
Ex-Overseas, 10 owners

Seats
7 seats

CO2 Emissions
☆☆☆☆☆☆

Energy Economy
☆☆☆☆☆☆
Annual fuel cost not available

Energy Consumption unknown.

Stock ID: 10737



Auto 66 | Phone 07 847 6646 | Email sales@auto66.co.nz
40 Greenwood Street, Frankton, Hamilton 3204, New Zealand
www.auto66.co.nz

* Auto 66 is not a lender nor a financial adviser. Any amounts displayed should not be seen as an offer of finance or taken as financial advice. The interest rate, fees and loan term used in this calculation may not actually represent those available from lenders. Actual interest rates, fees and loan terms will vary per lender and are typically based on an assessment of your credit risk and responsible lending criteria. Any repayment amounts displayed are indicative only and have been calculated using several other indicative inputs. The interest rate used in this calculation is an arbitrary 11.95%, however exact interest rates vary per lender. The term of the loan used in this calculation is 48 month. Exact terms available vary per lender although options typically include 6, 12, 18, 24, 36, 48 and 60 months. This calculation also includes a typical mandatory fee charged by lenders. This is a one-off establishment fee of \$523.00. Typically, this fee can be paid upfront or, as in this calculation, be capitalised over the contract term, ie. included in the loan amount. This fee can vary per lender and other non-mandatory fees and charges may also apply. The total amount of repayments has been calculated by multiplying 208 weekly repayments (based on a 48 month term) by the weekly repayment amount of \$148.86 which equals \$36,962.72. This calculator does not consider any of your own personal circumstances and we strongly suggest you seek budgeting advice prior to committing to any loan contract. Responsible lending criteria and lender terms and conditions will likely apply to any finalised loan contract. Proof of security and/or vehicle insurance may also be required before proceeding.