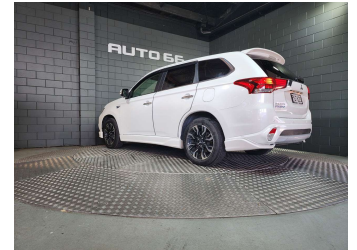
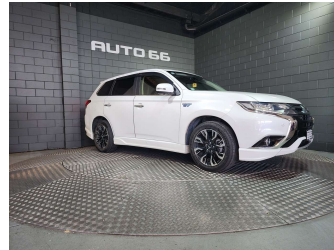
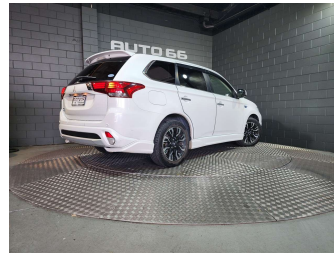


2015 Mitsubishi Outlander PLUG IN HYBRID



Purchase Price **\$22,995**
Includes GST, Registration & Licensing

Indicative repayments
\$114.86 per week*
Based on a 48 month term & 20% deposit.
Total repayments (208) = **\$28,490.78**

FINANCE

Gain peace of mind with Mechanical Breakdown Insurance. **Ask us how.**

Top features
None Listed

Body Style
5 door, SUV

Odometer
81,000 km

Engine
1998 cc, Plug-In Hybrid


Fuel Type
Petrol

Transmission
CVT, 4WD

Wheels
-

VIN
7AT0CJ3MX22305792

Interior
Black, Cloth & Suede

Safety

Based on 2025 UCSR rating for 12-21 models

Reg No.
PGT835

Ext Colour
White

History
Ex-Overseas, 2 owners

Seats
5 seats

CO2 Emissions
★★★★☆
64 grams/km

Energy Economy
★★★★☆
Annual fuel cost not available
2.7L per 100km

Actual figures and cost per year will vary based on proportion of hybrid mode driving and battery charging schedule. Emissions and Energy Economy figures standardised to 3P WLTP.

Stock ID: 10652



Auto 66 | Phone 07 847 6646 | Email sales@auto66.co.nz
40 Greenwood Street, Frankton, Hamilton 3204, New Zealand
www.auto66.co.nz

* Auto 66 is not a lender nor a financial adviser. Any amounts displayed should not be seen as an offer of finance or taken as financial advice. The interest rate, fees and loan term used in this calculation may not actually represent those available from lenders. Actual interest rates, fees and loan terms will vary per lender and are typically based on an assessment of your credit risk and responsible lending criteria. Any repayment amounts displayed are indicative only and have been calculated using several other indicative inputs. The interest rate used in this calculation is an arbitrary 11.95%, however exact interest rates vary per lender. The term of the loan used in this calculation is 48 month. Exact terms available vary per lender although options typically include 6, 12, 18, 24, 36, 48 and 60 months. This calculation also includes a typical mandatory fee charged by lenders. This is a one-off establishment fee of \$523.00. Typically, this fee can be paid upfront or, as in this calculation, be capitalised over the contract term, ie. included in the loan amount. This fee can vary per lender and other non-mandatory fees and charges may also apply. The total amount of repayments has been calculated by multiplying 208 weekly repayments (based on a 48 month term) by the weekly repayment amount of \$114.86 which equals \$28,490.78. This calculator does not consider any of your own personal circumstances and we strongly suggest you seek budgeting advice prior to committing to any loan contract. Responsible lending criteria and lender terms and conditions will likely apply to any finalised loan contract. Proof of security and/or vehicle insurance may also be required before proceeding.